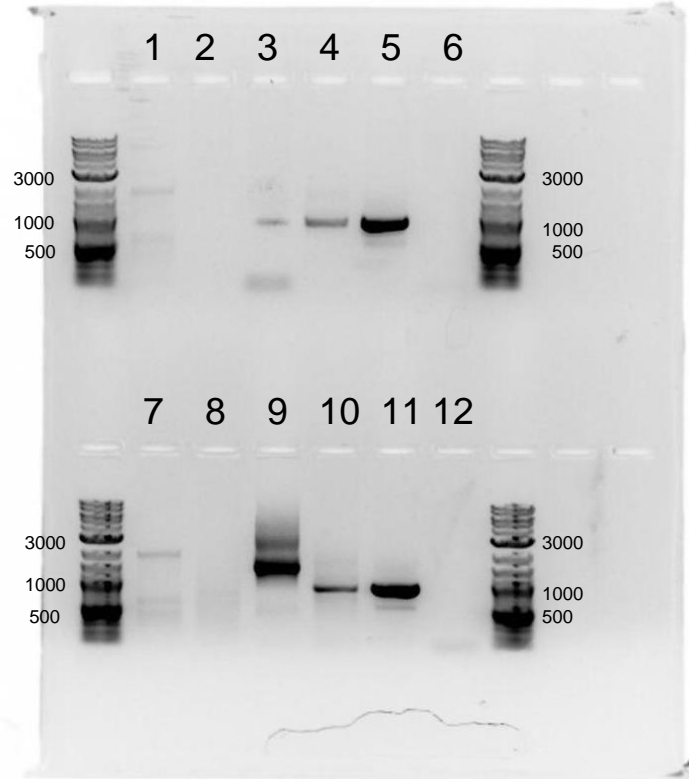


Small Gel 2: Lily & Nick

- 1: LA1
- 2: LA2
- 3: LA3
- 4: LA4
- 5: LA5(+)
- 6: LA6(-)

- 7: NB1
- 8: NB2
- 9: NB3
- 10: NB4
- 11: NB5(+)
- 12: NB6(-)

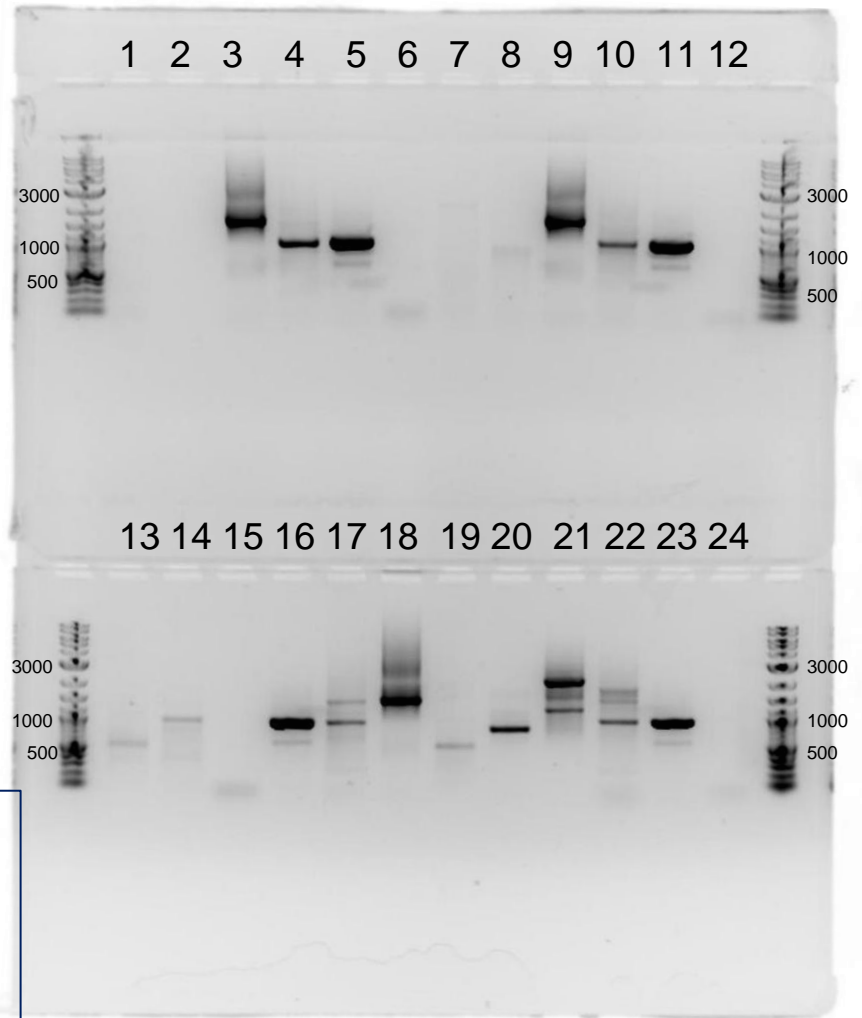
- 1: dsrAB 1800bp
- 2: mcrA 750bp
- 3: Bacteria 1450bp
- 4: Archaea 950bp
- 5: Archaea + 950bp
- 6: Negative control



Large Gel 2: Nora, Bri, Ella, Sydney

- | | |
|------------|-------------|
| 1: NOK1 | 13: ELF1 |
| 2: NOK2 | 14: ELF2 |
| 3: NOK3 | 15: ELF6(-) |
| 4: NOK4 | 16: ELF5(+) |
| 5: NOK5(+) | 17: ELF4 |
| 6: NOK6(-) | 18: ELF3 |
| 7: BS1 | 19: SR1 |
| 8: BS2 | 20: SR2 |
| 9: BS3 | 21: SR3 |
| 10: BS4 | 22: SR4 |
| 11: BS5(+) | 23: SR5(+) |
| 12: BS6(-) | 24: SR6(-) |

- | |
|---------------------|
| 1: dsrAB 1800bp |
| 2: mcrA 750bp |
| 3: Bacteria 1450bp |
| 4: Archaea 950bp |
| 5: Archaea + 950bp |
| 6: Negative control |

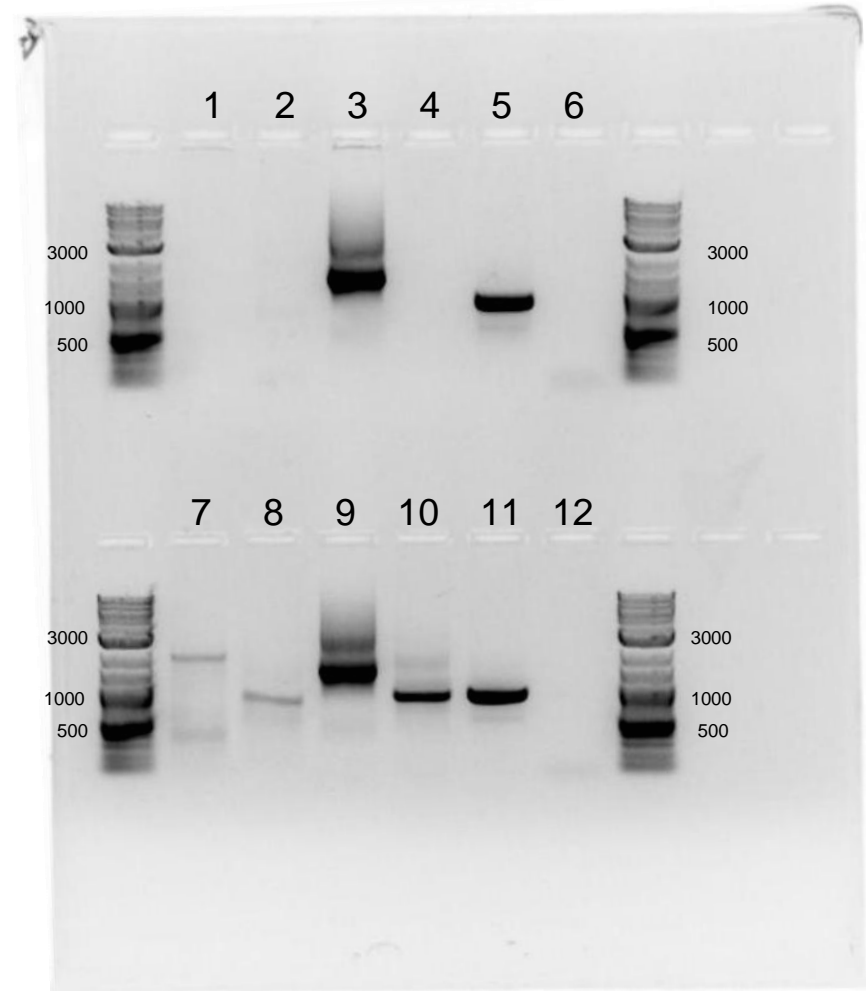


Small Gel 1: Gwyneth & Leah

- 1: GC1
- 2: GC2
- 3: GC3
- 4: GC4
- 5: GC5 (+)
- 6: GC6 (-)

- 7: LPR1
- 8: LPR2
- 9: LPR3
- 10: LPR4
- 11: LPR5(+)
- 12: LPR6(-)

- 1: dsrAB 1800bp
- 2: mcrA 750bp
- 3: Bacteria 1450bp
- 4: Archaea 950bp
- 5: Archaea + 950bp
- 6: Negative control



Large Gel 1: Sunniva, Alice, Anna, Alex

- | | |
|------------|------------|
| 1: SS1 | 13: AW1 |
| 2: SS2 | 14: AW2 |
| 3: SS3 | 15: AW3 |
| 4: SS4 | 16: AW4 |
| 5: SS5(+) | 17: AW5(+) |
| 6: SS6(-) | 18: AW6(-) |
| 7: AB1 | 19: AH1 |
| 8: AB2 | 20: AH2 |
| 9: AB3 | 21: AH6(-) |
| 10: AB4 | 22: AH5(+) |
| 11: AB5(+) | 23: AH4 |
| 12: AB6(-) | 24: AH3 |

- | |
|---------------------|
| 1: dsrAB 1800bp |
| 2: mcrA 750bp |
| 3: Bacteria 1450bp |
| 4: Archaea 950bp |
| 5: Archaea + 950bp |
| 6: Negative control |

