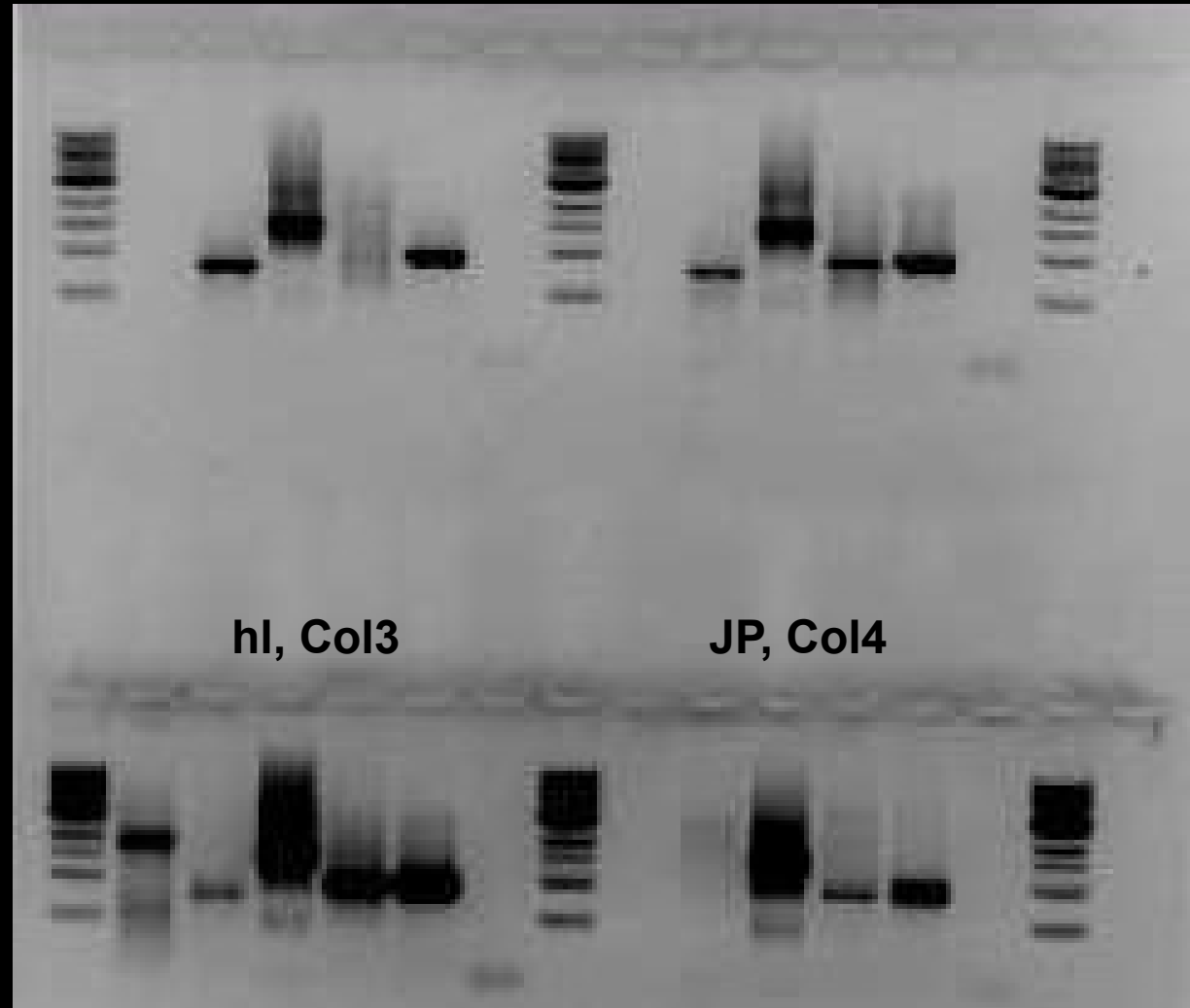


- 1: dsrAB 1800bp
- 2: mcrA 750bp
- 3: Bacteria 1450bp
- 4: Archaea 950bp
- 5: Archaea + 950bp
- 6: Negative control

ZC, Col1

R, Col2



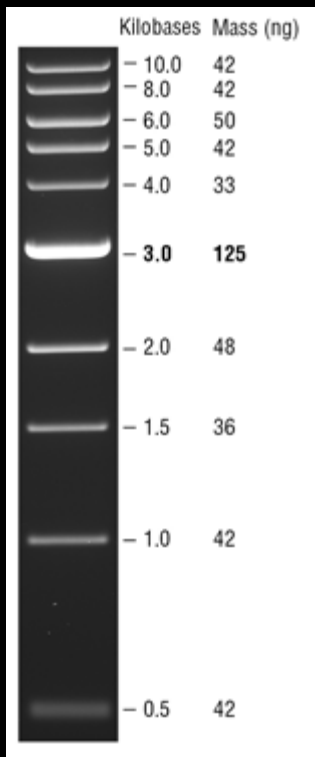
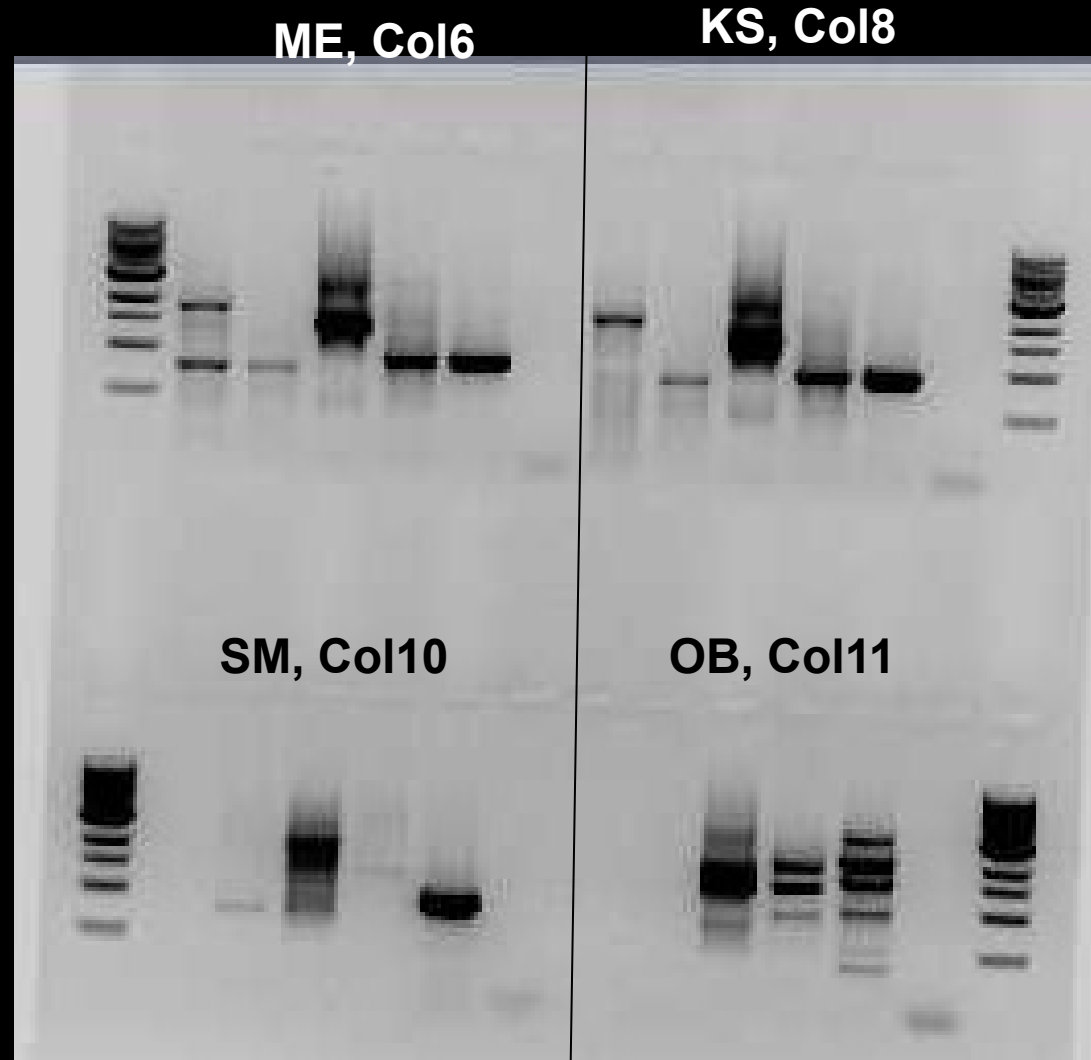
hl, Col3

JP, Col4

Kilobases Mass (ng)

—	- 10.0	42
—	- 8.0	42
—	- 6.0	50
—	- 5.0	42
—	- 4.0	33
—	- 3.0	125
—	- 2.0	48
—	- 1.5	36
—	- 1.0	42
—	- 0.5	42

- 1: dsrAB 1800bp
- 2: mcrA 750bp
- 3: Bacteria 1450bp
- 4: Archaea 950bp
- 5: Archaea + 950bp
- 6: Negative control



- 1: dsrAB 1800bp
- 2: mcrA 750bp
- 3: Bacteria 1450bp
- 4: Archaea 950bp
- 5: Archaea + 950bp
- 6: Negative control

HRG, Co112



Kilobases Mass (ng)

- 10.0	42
- 8.0	42
- 6.0	50
- 5.0	42
- 4.0	33
- 3.0	125
- 2.0	48
- 1.5	36
- 1.0	42
- 0.5	42