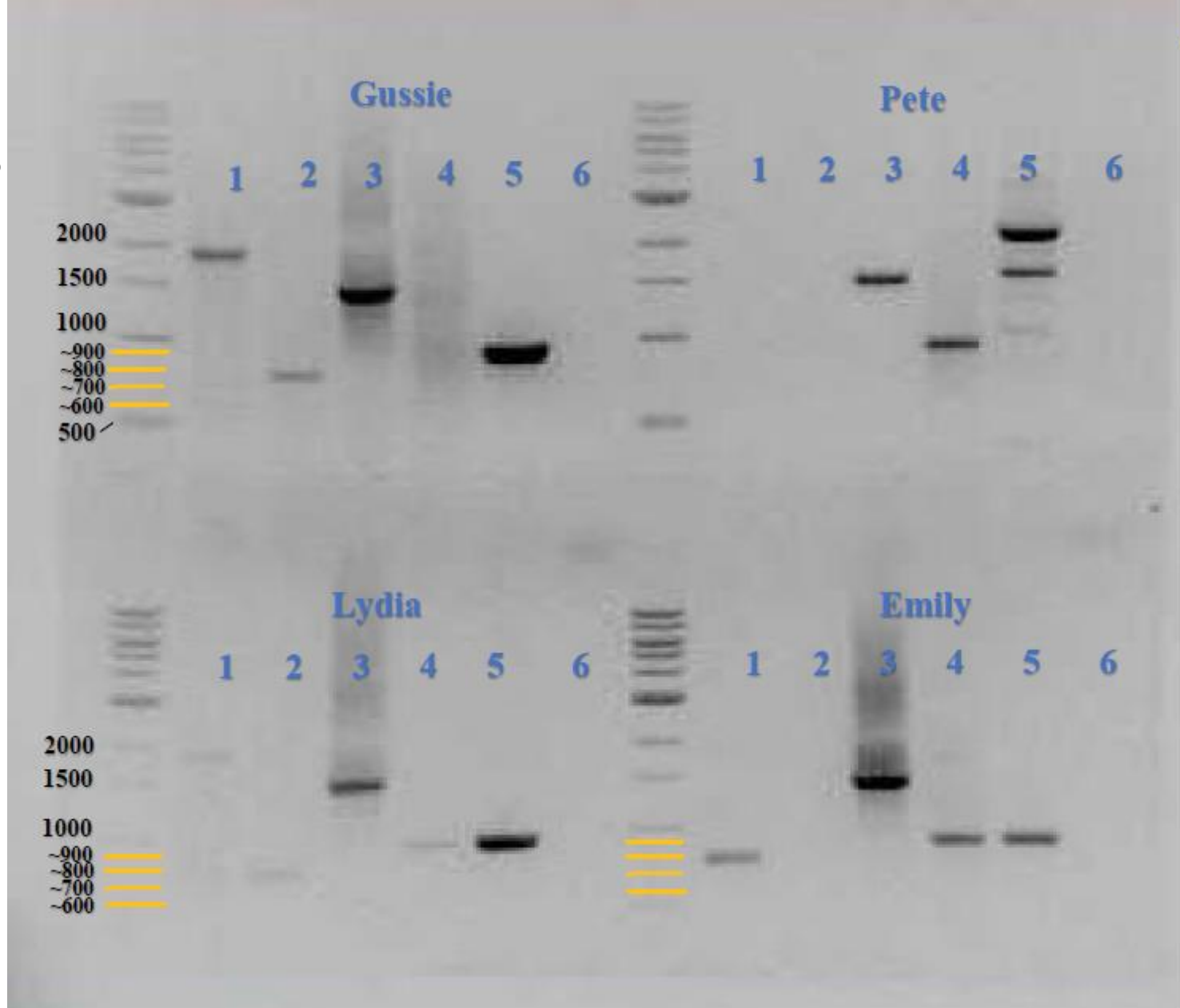


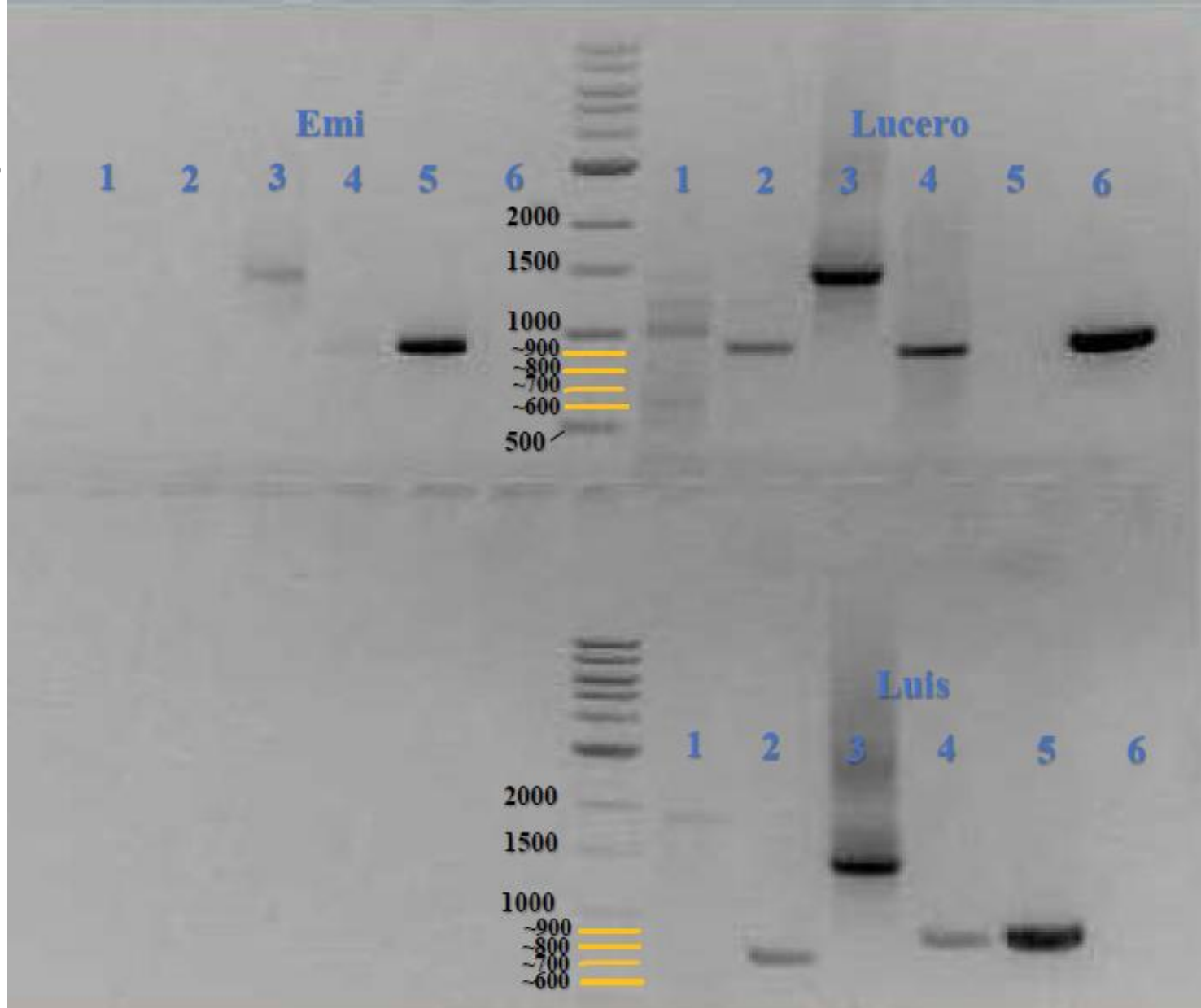
dsrAB 1800bp
 mcrA 750bp
 Bacteria 1450bp
 Archaea 950bp



Kilobases Mass (ng)

~10.0	42
~8.0	42
~6.0	50
~5.0	42
~4.0	33
~3.0	125
~2.0	48
~1.5	36
~1.0	42
~0.5	42

dsrAB 1800bp
 mcrA 750bp
 Bacteria 1450bp
 Archaea 950bp



Kilobases Mass (ng)

~10.0	42
~8.0	42
~6.0	50
~5.0	42
~4.0	33
~3.0	125
~2.0	48
~1.5	36
~1.0	42
~0.5	42